

# Data to Inform Justice Reinvestment

Data can sound complicated, but really it is just information which you use to tell a story. What we can learn from data is important to justice reinvestment, as it helps bring people together, and find the best ways to make change.

## Importance of Data and Information

In justice reinvestment, data helps you communicate a need for change, understand a situation, identify priority areas, track progress, learn what works and increase accountability. Using data keeps us on track and focused on making a meaningful difference, which is why being data-informed is a key principle of justice reinvestment. It's important to remember that data is not just numbers or statistics. Data is any information which is used to tell a story. This includes:

**Community Data** – information which you collect about your community's experiences such as:

- Stories, quotes, or interviews
- Surveys designed and delivered by your community
- Minutes or notes from a community meeting
- Pictures, artwork, videos, dances or other ways of telling stories

**Administrative Data** – Information collected by government or other organisations, such as:

- Population statistics
- Records of school attendance, police statistics, health services etc.
- Information on funding of programs or infrastructure in a community

## Information throughout the JR Journey

The types of information you need and what you use it for will change at different stages of your justice reinvestment journey. Here are some examples of what might be useful at different stages.



### Learn More About Justice Reinvestment

- Basic data on how many people are involved the justice system and how much this cost



### Bring Everyone Together for a Yarn

- Statistics to start a conversation (See below)
- Stories, art, and other feedback from community sharing their experience and priorities.



### Make a Plan for Change

- Baseline Data for key outcome areas that you can compare to later to demonstrate change
- More targeted information on priority areas, such as service mapping, detailed stats breakdowns, feedback from community on key issues.



### Putting the Plan into Action

- Information that shows how your project or program is working such as attendance figures, participant surveys.



### Regroup, Refocus and Reinvest

- Updates on baseline data that show the change you've made in key outcome areas
- Information on costs so you can demonstrate cost savings due to your impact
- Stories and statistics to help identify new priority areas

# Data and Service Mapping

Lots of communities find that Data and Service Mapping is a valuable tool to get people talking about and committed to justice reinvestment during the yarning stage. Plus, it's useful when you start putting together your plan for change too.

Data mapping is a process of collating many pieces of information from different areas and bringing it all together visually to help explain what is happening in a community. This is a useful way to learn more about what's happening in your community and to present this information in an easy to understand format so that everyone in the community can be involved in the conversation about what is happening and what could be done better. Service Mapping involves collecting information on what services and programs are operating in your community, to help identify gaps in services and opportunities for better collaboration and coordination.

Usually, it's best to start with publicly available data. If you need more information on a particular area that's interesting or a priority for the community you can consider approaching government departments for more detailed statistics or conducting community surveys or storytelling. Some recommendations on sources of data can be found in the tools & resources section below.

## In data mapping, you might want to include information on:

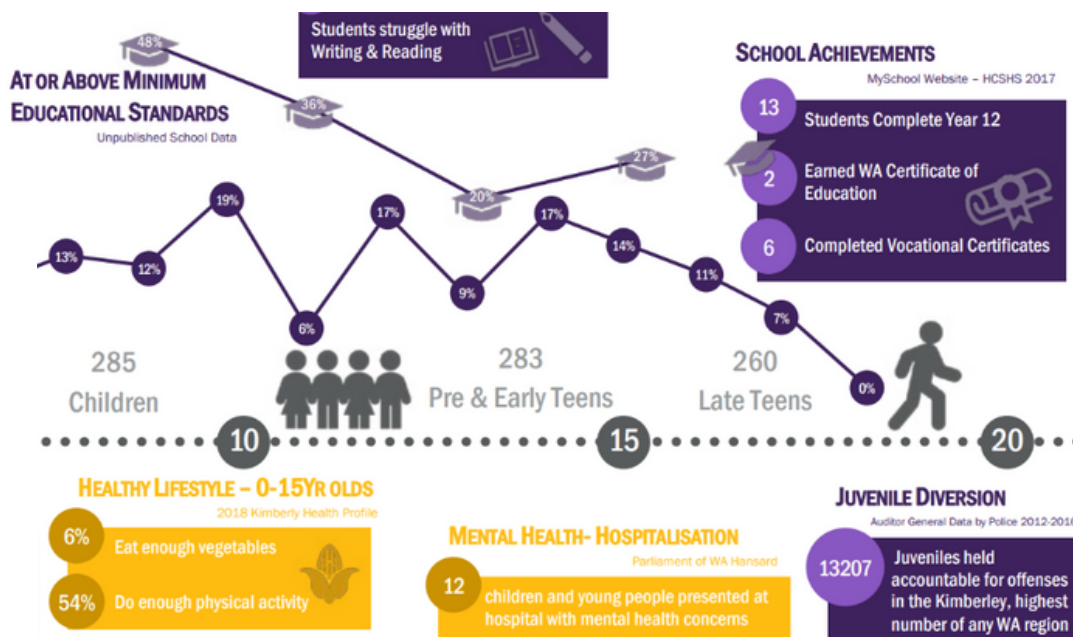
- Population & Diversity
- Early Childhood
- Health & Wellbeing
- Child Safety, Street Presence & Youth Activities
- Education, Training & Employment
- Income, Housing & Food Security
- Crime, Police, Courts & Prisons

## In service mapping, you might want to include information on:

- Types of services (i.e. mental health, youth engagement,
- Operating times
- Service capacity & waiting lists
- Funding amounts and sources
- Staffing levels

## You might want to organise this information by:

- Where things happen in the community
- Different ages across the lifespan
- Differences between Aboriginal & non-Aboriginal community members



Example: partial snapshot of the Olabug Doogethu Prospectus

Once you have the information and have identified what is most relevant and interesting, you should display it in visual way, such as a data story using infographics or similar. We have some templates for collecting information and examples of different ways to present it available on our resources page.

# Using Community Data as a Conversation Starter

Data Mapping is a useful tool to help start conversations with community members about justice reinvestment. This is why it's especially useful to get the information you collect visualised in an easy to understand way.

Here are some questions and conversation starters you can use when discussing data:

This is what we were able to find through research.  
Does it look right to you?  
Does it reflect your experience and local insight?

Why do you think \_\_\_\_\_ is so common here? What might be behind this issue?

Why do you think we don't have many problems with \_\_\_\_\_?  
What is going well to support this?

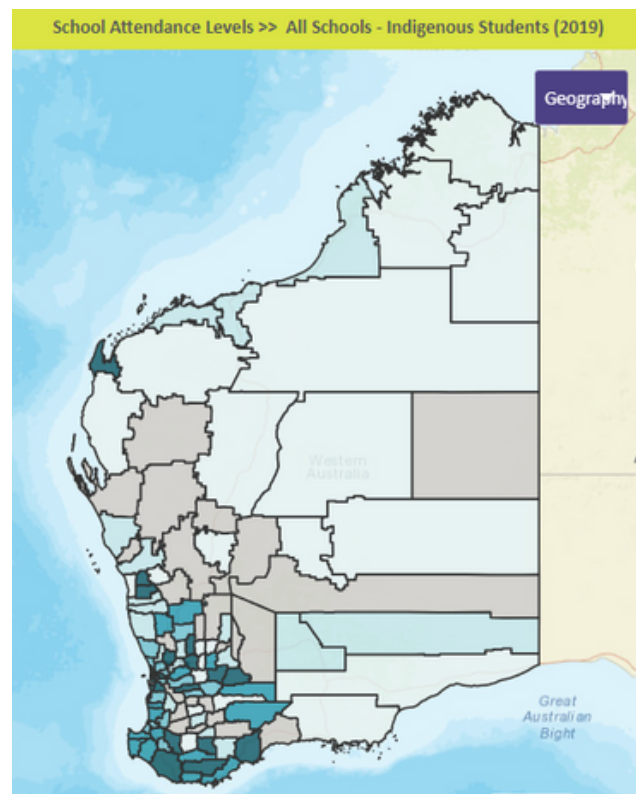
Is there anything else that hasn't been included here which is also important to understanding our community?

What is already happening to help with these issues?

## Helpful Tools and Resources

**On our website, you'll find links and resources to help you harness data for justice reinvestment, including:**

- Justice Reinvestment Network Australia – First Nations Data Sovereignty and Governance Principles for JRNA
- Data collection templates for data mapping
- Examples of visual data stories
- Example templates for service mapping
- Links to publicly available data sources, such as:
  - Australian Bureau of Statistics
  - WA Child Development Atlas
  - Social Health Atlases of Australia
  - WA Police Crime Statistics
  - Australian Early Development Census



Screenshot from the WA Child Development Atlas

**We're here to support along the way!**

srwa@srwa.org.au | 08 6381 5300 | socialreinvestmentwa.org.au