

MARANGUKA CSLG STRUCTURE

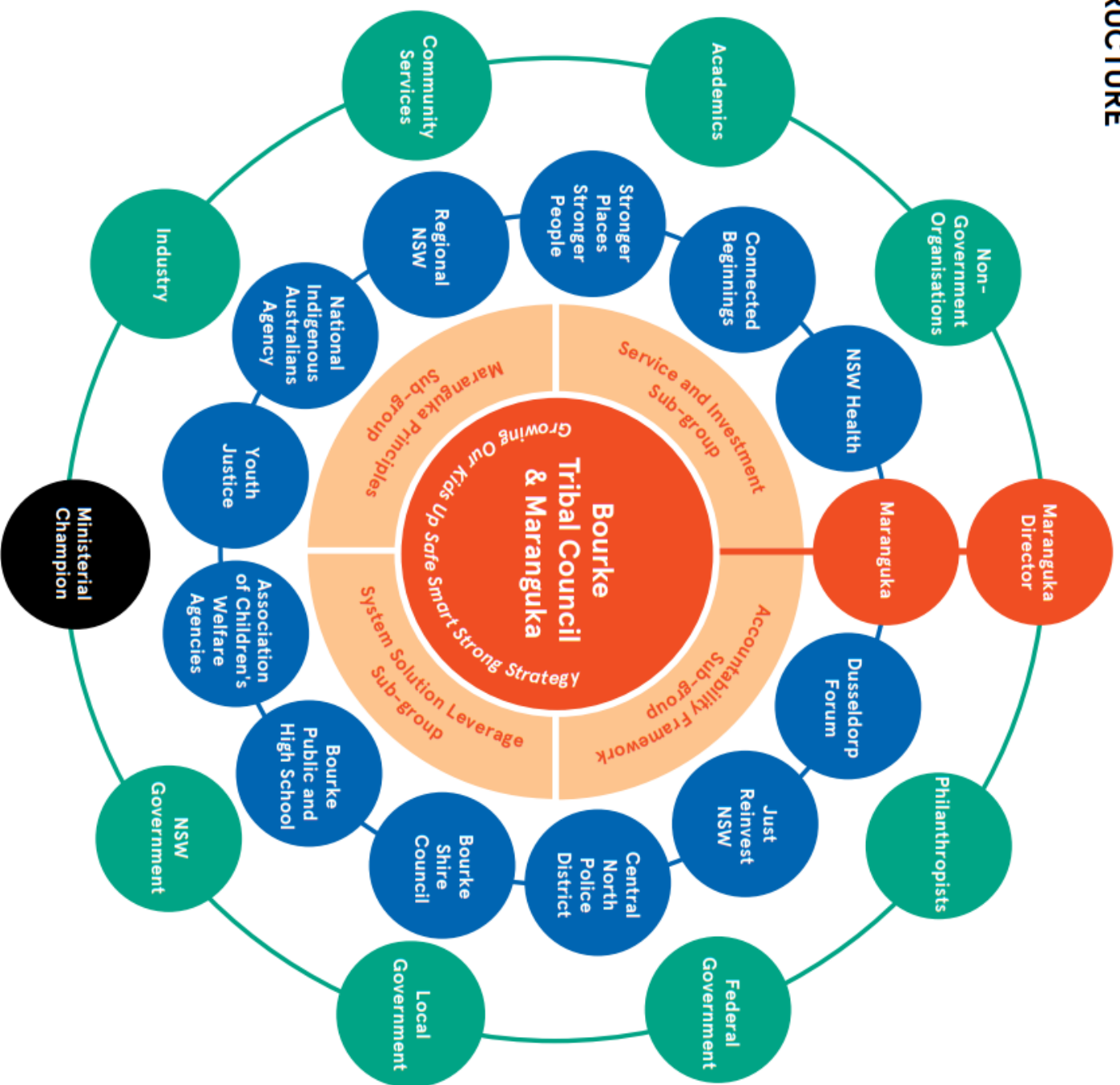
KEY

Bourke Tribal Council (BTC)
Community Leadership.
Developed the *Safe Smart Strong Strategy*, operationalised through Maranguka.

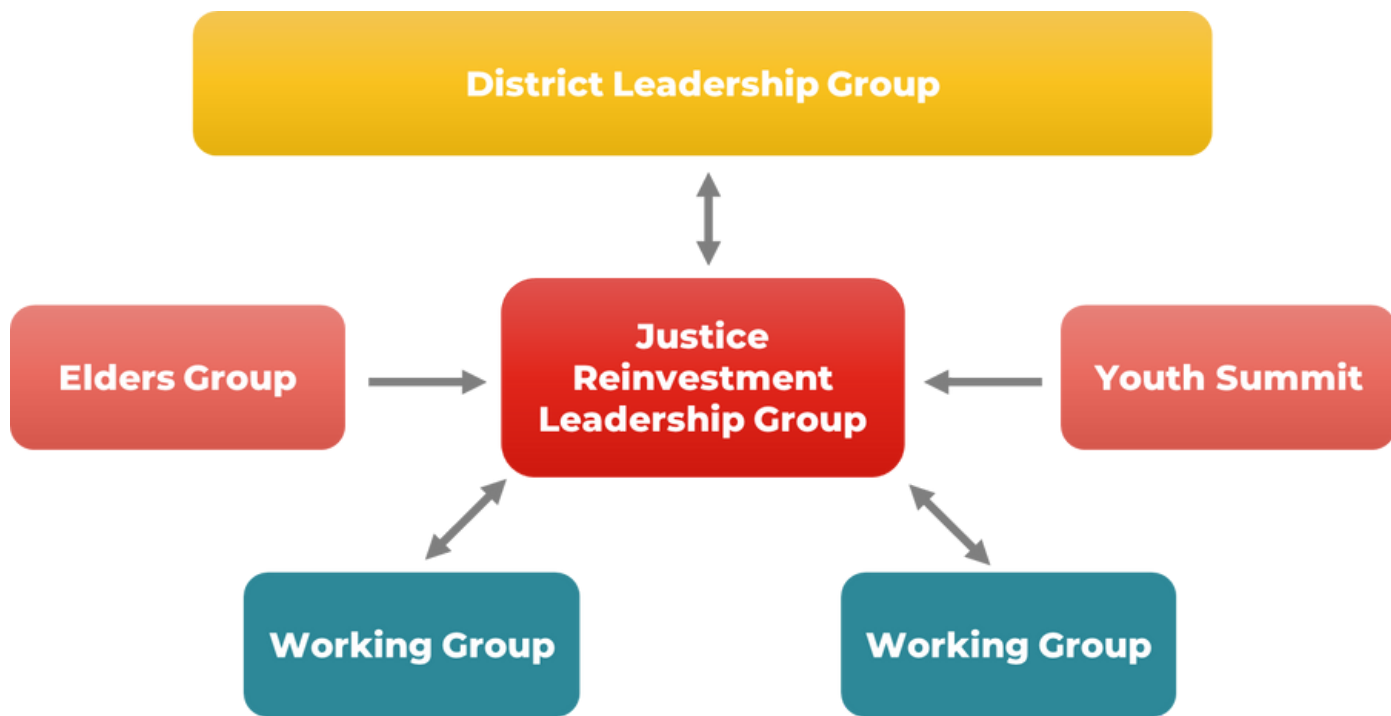
Cross Sector Leadership Group (CSLG)
Annual gathering of those supporting Bourke, convened by Maranguka and the Ministerial Champion.

Cross Sector Leadership Executive (CSLE)
Quarterly meetings of organisations with resources aligned towards Bourke, working to make *Safe Smart Strong Strategy* happen.

CSLE Subgroups
Working in key areas between CSLE meetings, reports to CSLE.



Example 2



Example 3

First Nations community-leadership

How will your work centre on and be led by First Nations voices from your community?

What are the decision-making processes?

Will your work be led by a single governance group or entity. Or will you develop individual community working groups for key priority areas?

How do you ensure partners are invited to the table without overstepping the leadership of First Nations community members?



Example governance structure

Overarching community strategy for change

Community leadership group

Meets monthly to make key decisions as needed.

Community reference group

Meets monthly. An open invitation to all community members and brings together members of the working groups to discuss progress to date and other emerging needs.

Backbone organisation

The organisation which supports the project administration needs of this approach (e.g. holding funds, coordinating meetings, etc).

Priority one: Education

Priority two: mental health

Community reference group

Partner reference group

Community reference group

Partner reference group

Meets weekly, members work to progress key actions between meetings

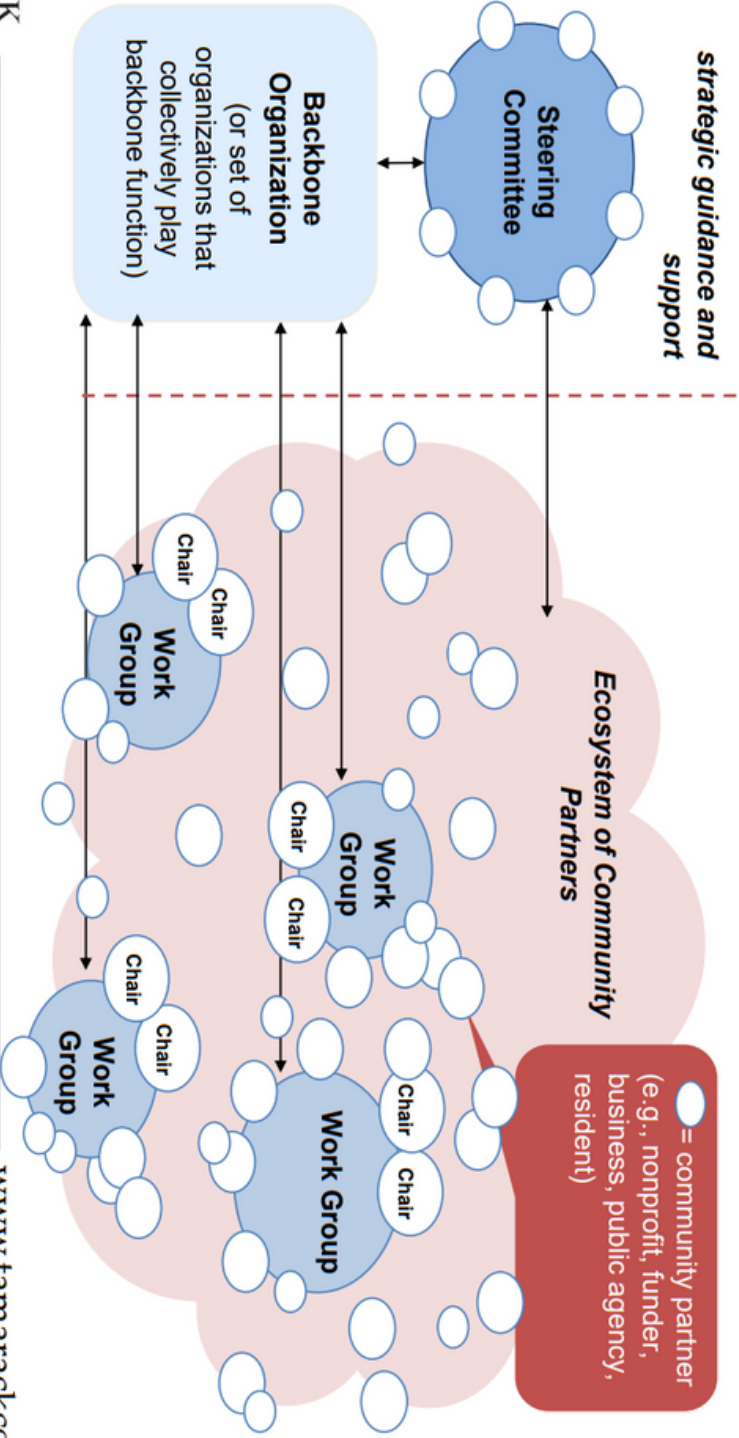
Meets monthly to engage with key partners within the sector

Meets weekly, members work to progress key actions between meetings

Meets monthly to engage with key partners within the sector

Collective Impact Governance Structuring for Intentionality and Uncertainty

Common Agenda and Shared Metrics



Adapted from *Listening to the Stars: The Constellation Model of Collaborative Social Change*, by Tonya Surman and Mark Surman, 2008.



www.tamarackcommunity.ca