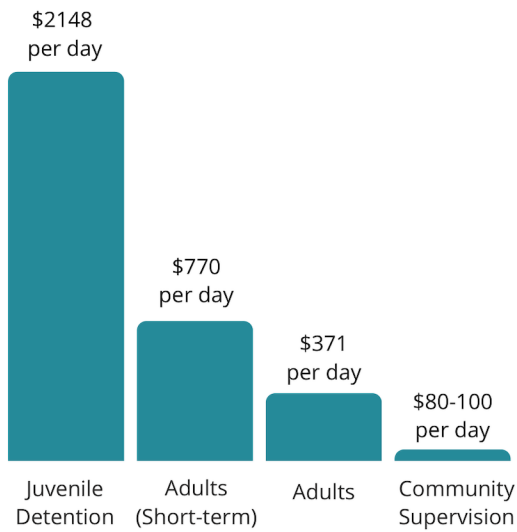


IMPRISONMENT IS COSTLY & INEFFECTIVE

## THE ISSUES

ABORIGINAL OVERREPRESENTATION IN THE JUSTICE SYSTEM

### COST OF IMPRISONING A PERSON



**\$800M**

Corrective Services

**\$75M**

Youth Detention

### ABORIGINAL AND TORRES STRAIT ISLANDER PEOPLE MAKE UP:

- 3.1%** of the total WA population
- 42%** of men imprisoned in WA
- 52%** of women imprisoned in WA
- 73%** of children (10-17 years old) imprisoned in WA



**93%** increase in prisoner population from 2006

### FOR WA:

- The prison population is increasing faster than other states.
- The average incarceration rate is the highest in Australia, and for Aboriginal people, the highest rate of incarceration in the world.

### RECIDIVISM IN WA

**79%** of adults had been in prison before

**62%** of children (10-17 years old) return to detention

### SNAPSHOT OF JUSTICE SPENDING (WA)

**\$637M**

Funding police and expanding prisons

**\$64.8M**

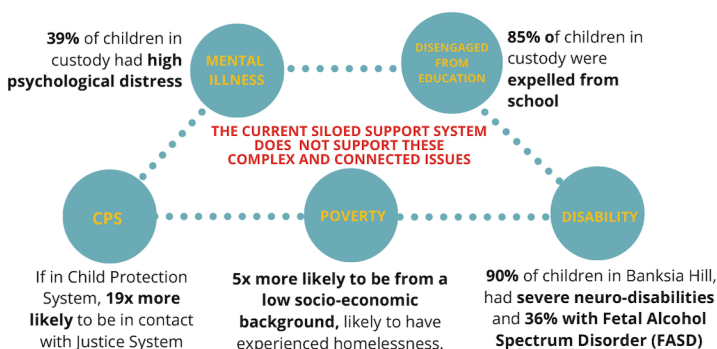
Early intervention, prevention, and rehabilitation

## THE CAUSES

### IMPRISONMENT IS A REACTION TO CRIME, NOT A RESPONSE TO UNDERLYING CAUSES OF OFFENDING

With high recidivism, prisons are not rehabilitative or making our communities safer long term. This is a costly waste of resources & is not providing individuals, families & communities with the holistic support they need.

### SOCIAL CAUSES OF CRIME



Our colonial history has caused intergenerational trauma, entrenched poverty & disadvantage & systemic racism which means that Aboriginal and Torres Strait Islander people are more likely to:

- 1.3x** Experience mental health issues
- 10x** Have children taken into care
- 3.2x** Be picked up for speeding by police, compared to cameras
- 26x** Youth more likely to be detained rather than cautioned
- 26%** Less likely to stay in high school



### Tough on crime?

Research from Edith Cowan University (2019) shows that there is low public awareness and understanding of the WA justice system. However, with education, perception shifts away from 'tough on crime' attitudes towards addressing underlying causes of crime.

## WE CAN CREATE:

## THE SOLUTION

### HEALTHY FAMILIES

WA needs to place the wellbeing of individuals, family & community at the centre of its approach to crime & justice issues

### SMART JUSTICE

Community safety is better served by recognising & responding to the underlying causes of offending & adopting an approach of social reinvestment

### SAFE COMMUNITIES

This holistic system approach needs to be informed by the voice of community to address the needs and implement best practices.

## WHEN WE STRIVE FOR:

JUSTICE REINVESTMENT



LAW REFORM



DATA DRIVEN, TARGETED, COORDINATED RESPONSES



ANTI-RACIST, ACCOUNTABLE, TRANSPARENT SYSTEMS



PLACE BASED, COMMUNITY LED DECISION MAKING & CO-DESIGN



PRIORITISED CULTURAL, SOCIAL, AND EMOTIONAL WELLBEING



## ABOUT SRWA

Social Reinvestment WA (SRWA) is an Aboriginal and sector led coalition, of more than 30 not-for-profit member organisations with a vision for an effective and connected approach to justice. We are connectors, builders, weavers, and storytellers with the expertise to end the over-representation of Aboriginal people in WA's justice system. Our role includes advocacy, research and policy development, education, and community support. Working together, we are a strong, independent voice collectively calling for systemic reform, and our coalition demonstrates the collaboration needed to resolve the most pressing issues in our society.



### CASE STUDY: JUSTICE REINVESTMENT

When we started this work, justice reinvestment was a new and emerging space in Australia. Not many people knew about it or believed it could be a real alternative to continual cycles of crime and imprisonment, and we were still learning about how justice reinvestment might look. We are proud today to have played a part in getting justice reinvestment into mainstream focus - and we look forward to working with communities, government, organisations, and allies to see Justice Reinvestment reach its full potential.

### CASE STUDY: FINE DEFAULT REFORM

On 16 June 2020, SRWA successfully won a campaign to end the imprisonment of people for unpaid fines. After four years of campaigning, it was supported by WA Labor, Greens, Nationals, and One Nation. This success led to establishing alternative options for disadvantaged people living in hardship to pay off their fines (the Work and Development Permit Scheme) which creates a fairer system where prison terms can only be handed out by a Magistrate or Judge and not by a government agency (the Fines Enforcement Registrar), and also ending the detrimental impact of license suspensions on people in remote communities and regions. Holistically, this success has reduced the Aboriginal overrepresentation in WA's prisons, generate economic savings for the state, and create a fairer justice system for all people.

**LET'S WORK TOGETHER FOR AN EFFECTIVE & CONNECTED APPROACH TO JUSTICE!**



[socialreinvestmentwa.org.au](https://socialreinvestmentwa.org.au)



[srwa@srwa.org.au](mailto:srwa@srwa.org.au)



Social Reinvestment WA



[@social.reinvestment.wa](https://www.instagram.com/social.reinvestment.wa)



Stories From The Inside